



Asami

design
Filippo Protasoni

Asami



L 47 cm
 P 49 cm
 H 85 cm
 HS 46 cm

Struttura / Structure
Cromato / Chromed



C CN

Verniciato / Lacquered



GO AS AN SA TO RU AZ BI NE

Seduta / Seat

Tessuto / Fabric MIRAGLIO



M104 M130 M105 M24 M15 M56 M17 M19 M23 M615 M80 M616 M205



M617 M16 M18 M14 M90 M26 M100 M21 M07 M10 M2100 M13

Tessuto / Fabric BOGOTÀ



BO615 BO622 BO17 BO100 BO130 BO02 BO205

Tessuto / Fabric TARANTINO



TA20 TA622 TA28 TA17 TA19

Tessuto / Fabric LAS VEGAS



LV622 LV616 LV20 LV28 LV100 LV130 LV11 LV204

Tessuto / Fabric SAKE



SK01 SK02 SK03 SK06 SK10 SK12 SK13 SK20 SK25 SK42 SK45 SK46

Pelle / Leather

Tutti i colori
All colors



PS PC PTM PN PB

Ecopelle / Imitation Leather ALCE

Tutti i colori
All colors



A001 A016 A140 A175 A240 A450 A750 A850 A950

Ecopelle / Imitation Leather NOBUKO



N03 N756 N516 N780 N483 N603 N06

Ecopelle / Imitation Leather TIME

Tutti i colori
All colors



T783 T151 T776 T792 T016 T50 T804 T777 T791 T800 T003

Lana / Wool NORDIC

Tutti i colori
All colors



NC1000 NC1002 NC1037 NC1042 NC2017 NC2151 NC2279 NC2288 NC9860

Ignifugo
Flame-retardant





Asami-SA/B

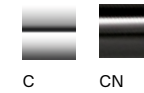
design
Filippo Protasoni

Asami-SA/B

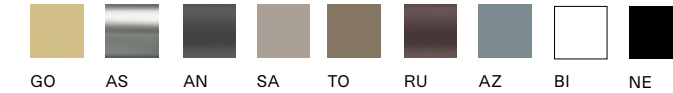
	Asami-SA	Asami-SB
L	51 cm	51 cm
P	44 cm	44 cm
H	105 cm	93 cm
HS	76 cm	66 cm



Struttura / Structure Cromato / Chromed

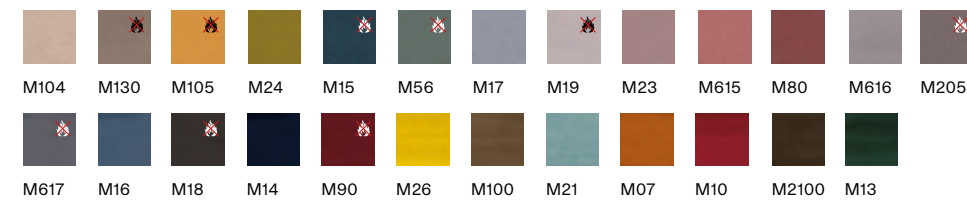


Verniciato / Lacquered



Seduta / Seat

Tessuto / Fabric MIRAGLIO



Tessuto / Fabric BOGOTÀ



Tessuto / Fabric TARANTINO



Tessuto / Fabric LAS VEGAS

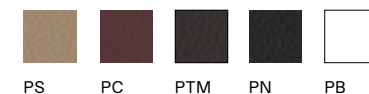


Tessuto / Fabric SAKE



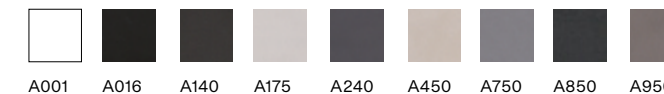
Pelle / Leather

Tutti i colori
All colors



Ecopelle / Imitation Leather ALCE

Tutti i colori
All colors

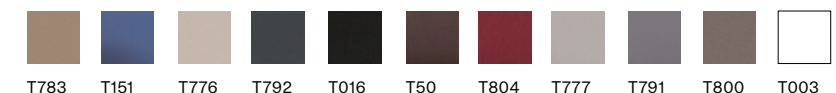


Ecopelle / Imitation Leather NOBUKO



Ecopelle / Imitation Leather TIME

Tutti i colori
All colors



Lana / Wool NORDIC

Tutti i colori
All colors



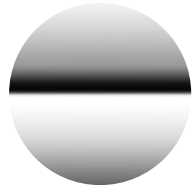
Ignifugo
Flame-retardant



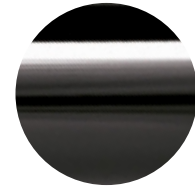
Finiture / Finishes

Acciaio - Steel - Stahl - Acier - Acero

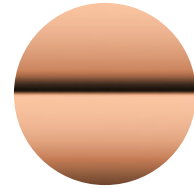
Chromato - Chromed



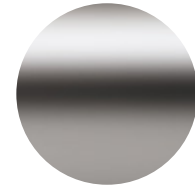
C
Cromato
Chromed
Verchromt
Chrome
Cromado



CN
Cromato nero
Black chromed
Verchromt Schwarz
Chrome noir
Cromado negro



OR
Oro rosa
Rose gold
Rosafarbenen goldes
Or rosé
Oro Rosado

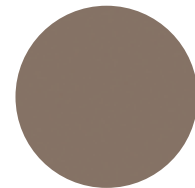


NIS
Nichel spazzolato
Stainless nickel
Edelstahl
Acier brossé
Niquel inoxidable

Verniciato - Lacquered



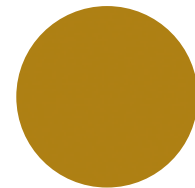
SA
Sabbia opaco
Sand matt
Sand matt
Sable mat
Arena mate



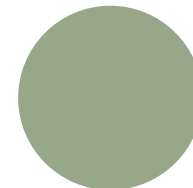
TO
Tortora opaco
Taupe matt
Taubengrau matt
Taupe mat
Tórtora mate



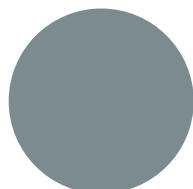
RU
Ruggine opaco
Rust matt
Rost matt
Rouille mat
Herrumbre mate



SE
Senape opaco
Mustard matt
Senf matt
Moutarde mat
Mostaza mate



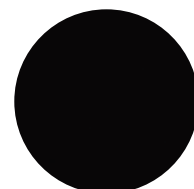
VS
Verde salvia opaco
Light green matt
Hellgrün matt
Vert sauge mat
Verde claro mate



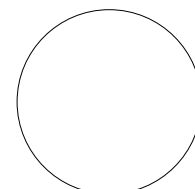
AZ
Azzurro opaco
Light blue matt
Hellblau matt
Azur mat
Azul mate



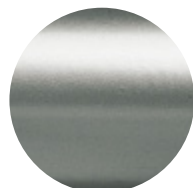
AN
Antracite opaco
Anthracite matt
Anthrazit matt
Anthracite mat
Gris oscuro mate



NE
Nero opaco
Black matt
Schwarz matt
Noir mat
Negro mate



BI
Bianco opaco
White matt
Weiß matt
Blanc mat
Blanco mate



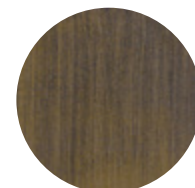
AS
Alluminio satinato
Satinated aluminium
Alufarbig satiniert
Aluminium satiné
Aluminio satinado



GO
Oro opaco
Gold matt
Gold matt
Or mat
Oro mate



ON
Oro nuvolato
Cloudy gold
Bewölktes Gold
Or nuageux
Oro nuablado



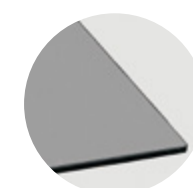
BS
Ottonato
Brassed
Brassed
Laitonné
Latonato

Finiture / Finishes

Vetro temprato - Tempered glass - Sicherheitglas - Verre trempé - Vidrio templado



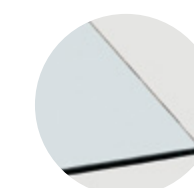
VCA
Acidato corda
Rope acid-etched
Seil satiniert
Corde traité à l'acide
Cuerda tratado al ácido



VTS
Fumè trasparente
Transparent smoke
Transparent rauch
Fumé transparent
Humo transparente



VBA
Acidato bianco
White acid-etched
Weiss satiniert
Blanc traité à l'acide
Blanco tratado al ácido



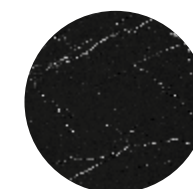
VT
Trasparente, filo lucido
Transparent, straight edge
Transparent, gerade kante
Transparent, chant droit
Transparente, borde recto

Marmo - Marble - Marmor - Marbre - Mármol



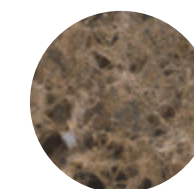
MCAM
Bianco carrara opaco
White Carrara matt

MCAG
Bianco carrara lucido
White Carrara glossy



MMNM
Nero Marquina opaco
Black Marquina matt

MMNG
Nero Marquina lucido
Black Marquina glossy



MEMM
Emperador opaco
Emperador matt

MEMG
Emperador lucido
Emperador glossy

Finiture / Finishes

Tessuto / Fabric – Stoff – Tissu – Tejido

Bogotá

Composizione
Composition:
100% PL
Solidità alla luce
Light fastness:
≥ 4
Resistenza all'abrasione
Abrasion resistance:
Martindale
≥ 30.000 cicli / cycles



BO615
Beige
Beige
Beige
Beige
Beige



BO622
Fumo
Smoke
Rauch
Fumé
Humo



BO17
Perla
Pearl
Perle
Perle
Perla



BO100
Asfalto
Road
Asphalt
Asphalte
Asfalto



BO130
Tortora
Taupe
Braungrau
Taupe
Gris topo



BO02
Cammello
Camel
Kamel
Chameau
Camel



BO205
Ferro
Iron
Eisen
Fer
Hierro

Tarantino

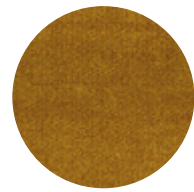
Composizione
Composition:
12% VI - 88% PL
Solidità alla luce
Light fastness:
≥ 4
Resistenza all'abrasione
Abrasion resistance:
Martindale
≥ 100.000 cicli / cycles



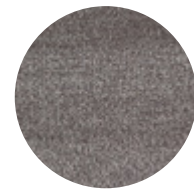
TA20
Sabbia
Sand
Sand
Sable
Arena



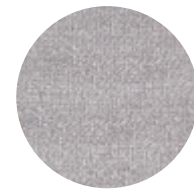
TA622
Castano
Chestnut
Kastanien braun
Châtain
Castaño



TA28
Zafferano
Saffron
Safran
Safran
Azafrán



TA17
Cenere
Ash
Asche
Cendre
Ceniza



TA19
Perla
Pearl
Perle
Perle
Perla

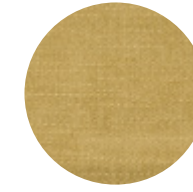


Finiture / Finishes

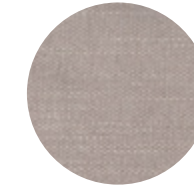
Tessuto / Fabric – Stoff – Tissu – Tejido

Las Vegas

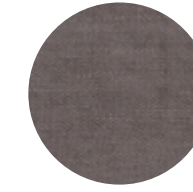
Composizione
Composition:
12% VI - 88% PL
Solidità alla luce
Light fastness:
≥ 4
Resistenza all'abrasione
Abrasion resistance:
Martindale
≥ 80.000 cicli / cycles



LV28
Limone
Lemon
Zitron
Citron
Limòn



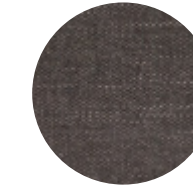
LV616
Oyster
Oyster
Auster
Huitre
Ostra



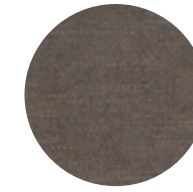
LV622
Talpa
Dark taupe
Dunkles Taupe
Taupe foncé
Marrón oscuro



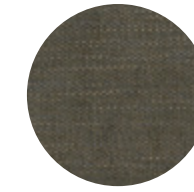
LV20
Lino
Linen
Leinen
Lin
Lino



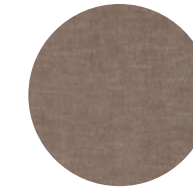
LV100
Cenere
Ash
Asche
Cendre
Ceniza



LV11
Fango
Mud
Schlamm
Boue
Barro



LV204
Bosco
Wood
Holz
Bois
Madera



LV130
Tortora
Taupe
Braungrau
Taupe
Gris topo



Finiture / Finishes

Tessuto / Fabric – Stoff – Tissu – Tejido

Miraglio

Composizione
Composition:
100% PL
Solidità alla luce
Light fastness:
≥ 4
Resistenza all'abrasione
Abrasion resistance:
Martindale
≥ 100.000 cicli / cycles

Idrorepellente
Water-repellent



M104
Crema
Cream
Crème
Crème
Crema



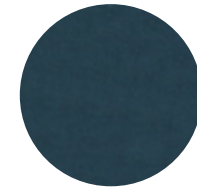
M130
Cachi
Khaki
Khaki
Kaki
Caqui



M105
Mandarino
Tangerine
Mandarine
Mandarin
Mandarina



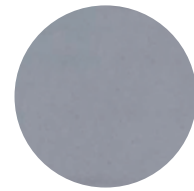
M24
Oliva
Olive
Olive
Olive
Aceituna



M15
Petrolio
Petrol
Erdoel
Pétrole
Petróleo



M56
Cadetto
Sage green
Graugrün
Vert sauge
Salvia



M17
Carta da zucchero
Egg blue
Blassblau
Carte de sucre
Celeste



M19
Pervinca
Periwinkle
Hellviolett
Pervenche
Violeta



M23
Rosa
Pink
Rose
Rose
Rosa



M615
Salmone
Salmon
Lachs
Saumon
Salmón



M80
Terracotta
Brick
Ziegel rot
Brique
Ladrillo



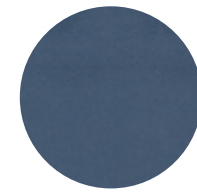
M616
Cenere
Ash
Asche
Cendre
Ceniza



M205
Fumo
Smoke
Rauch
Fumé
Humo



M617
Ardesia
Slate
Schiefer
Ardoise
Pizarra



M16
Avio
Air force blue
Blau-grau
Bleu
Avio



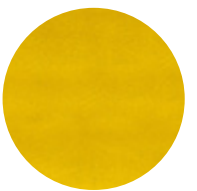
M18
Carbone
Charcoal
Kohle
Charbon
Carbón



M14
Oltremare
Deep sea
Tiefsee
Eau profonde
Agua profunda



M90
Amaranto
Amaranth
Amaranto
Amaranto
Amaranto



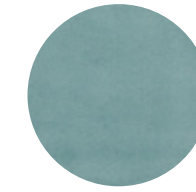
M26
Zafferano
Saffron
Safran
Safran
Azafrán



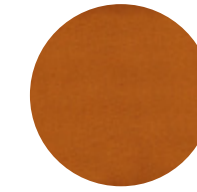
M100
Tronco
Trunk
Kofferraum
Coffre
Tronco

Finiture / Finishes

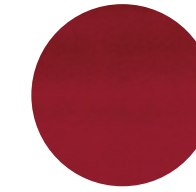
Tessuto / Fabric – Stoff – Tissu – Tejido



M21
Turchese
Turquoise
Türkis
Turquoise
Turquesa



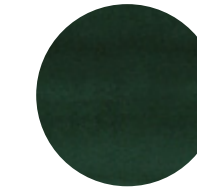
M07
Ruggine
Rust
Rost
Rouille
Herrumbre



M10
Scarlatto
Scarlet
Scharlach
Écarlate
Escarlata



M2100
Bistrot
Bistro
Bistro
Bistrot
Bistro

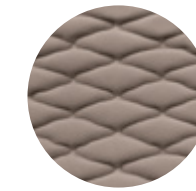


M13
Felce
Fern
Farn
Fougère
Helecho

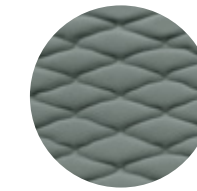
Miraglio-T

Composizione
Composition:
100% PL
Solidità alla luce
Light fastness:
≥ 4
Resistenza all'abrasione
Abrasion resistance:
Martindale
≥ 100.000 cicli / cycles

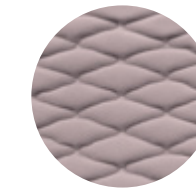
Idrorepellente
Water-repellent



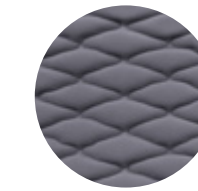
MT130
Cachi
Khaki
Khaki
Kaki
Caqui



MT56
Cadetto
Sage green
Graugrün
Vert saug
Salvia



MT19
Pervinca
Periwinkle
Hellviolett
Pervenche
Violeta



MT617
Ardesia
Slate
Schiefer
Ardoise
Pizarra



MT18
Carbone
Charcoal
Kohle
Charbon
Carbón



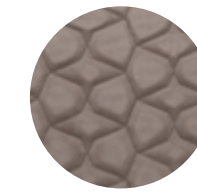
Miraglio-TM

Composizione
Composition:
100% PL
Solidità alla luce
Light fastness:
≥ 4
Resistenza all'abrasione
Abrasion resistance:
Martindale
≥ 100.000 cicli / cycles

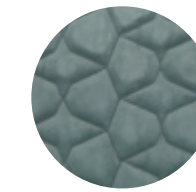
Idrorepellente
Water-repellent



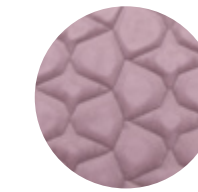
MTM104
Crema
Cream
Crème
Crème
Crema



MTM130
Cachi
Khaki
Khaki
Kaki
Caqui



MTM56
Cadetto
Sage green
Graugrün
Vert saug
Salvia



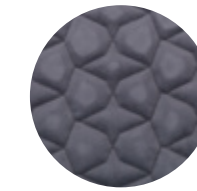
MTM23
Rosa
Pink
Rose
Rose
Rosa



MTM80
Terracotta
Brick
Ziegel rot
Brique
Ladrillo



MTM205
Fumo
Smoke
Rauch
Fumé
Hu



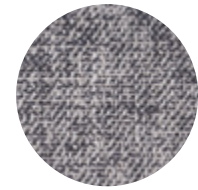
MTM617
Ardesia
Slate
Schiefer
Ardoise
Pizarra

Finiture / Finishes

Tessuto / Fabric – Stoff – Tissu – Tejido

Sake

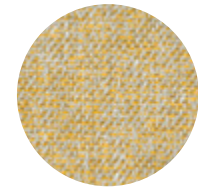
Composizione
Composition:
34% CO, 32% VI, 13% AC,
14% LI, 7% PL
Solidità alla luce
Light fastness:
≥ 4/5
Resistenza all'abrasione
Abrasion resistance:
Martindale
≥ 20.000 cicli / cycles
Resistenza al pilling
Pilling:
4



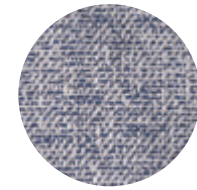
SK01
Cenere
Ash
Asche
Cendre
Ceniza



SK02
Tortora
Taupe
Braungrau
Taupe
Gris topo



SK03
Ocra
Ochre
Ocker
Ocre
Ocre



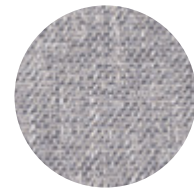
SK06
Notte
Night
Nacht
Nuit
Noche



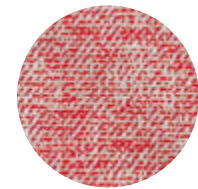
SK10
Ghiaccio
Ice
Eis
Glace
Hielo



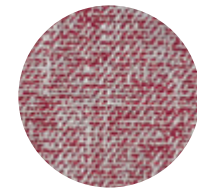
SK12
Corda
Rope
Seil
Corde
Cuerda



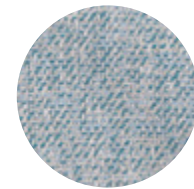
SK13
Grigio
Grey
Grau
Gris
Gris



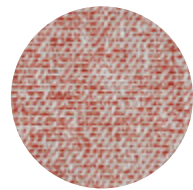
SK20
Ciclamino
Cyclamen
Zyklamen
Cyclamen
Cyclamen



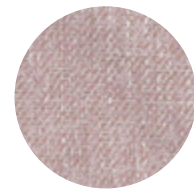
SK25
Bordeaux
Bordeaux
Bordeaux
Bordeaux
Bordeaux



SK42
Acquamarina
Aquamarine
Aquamarin
Agu-marine
Aguamarina



SK45
Ruggine
Rust
Rost
Rouille
Herrumbre



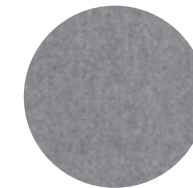
SK46
Rosa
Pink
Rose
Rose
Rosa

Finiture / Finishes

Lana / Wool – Wolle – Laine – Lana

Nordic

Composizione
Composition:
70% WO, 25% PA, 5% AF
Solidità alla luce
Light fastness:
5
Resistenza all'abrasione
Abrasion resistance:
Martindale
≥ 100.000 cicli / cycles



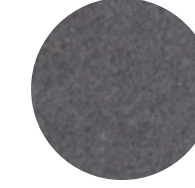
NC1000
Grigio
Grey
Grau
Gris
Gris



NC1002
Carbone
Charcoal
Kohle
Charbon
Carbón



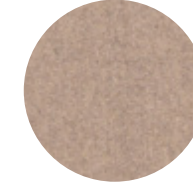
NC1037
Beige
Beige
Beige
Beige
Beige



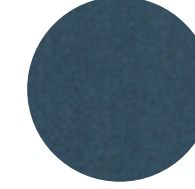
NC1042
Acciaio
Steel
Stehlen
Acier
Acero



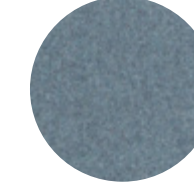
NC2017
Castano
Chestnut
Kastanien braun
Chatain
Castaño



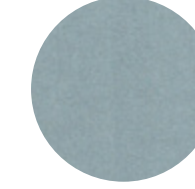
NC2151
Sabbia
Sand
Sand
Sable
Arena



NC2279
Petrolio
Petrol
Erdoel
Pétrole
Petróleo



NC2288
Azzurro
Light blue
Blau
Bleu
Azul



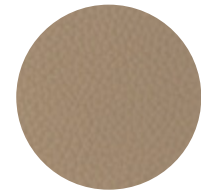
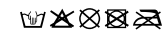
NC9860
Turchese
Turquoise
Türkis
Turquoise
Turquesa

Finiture / Finishes

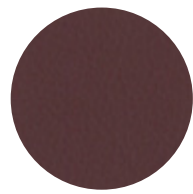
Pelle / Leather – Leder – Cuir – Piel

Pelle – Leather – Leder – Cuir – Piel

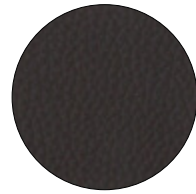
Composizione
Composition:
100% Pelle naturale
Leather
Solidità alla luce
Light fastness:
8
Solidità alla flessione ripetuta /
Repeated flexural strength:
Martindale
≥ 50.000 cicli / cycles



PS
Sabbia
Sand
Sand
Sable
Arena



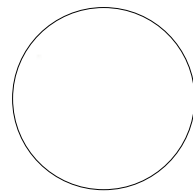
PC
Caffè
Coffee
Kaffee
Café
Café



PTM
Testa di moro
Dark brown
Dunkelbraun
Marron
Marrón



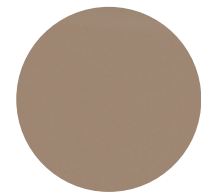
PN
Nero
Black
Schwarz
Noir
Negro



PB
Bianco
White
Weiß
Blanc
Blanco

Time

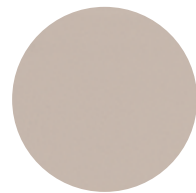
Composizione
Composition:
10% CO - 20% PES -
70% PVC
Solidità alla luce
Light fastness:
4/5
Resistenza all'abrasione
Abrasion resistance:
Martindale
≥ 102.400 secco/dry
cicli / cycles
≥ 51.200 umido/wet
cicli / cycles
Cl. 1IM - IMO -
BS7176/EN1021
PARTS 1&2
1994 - BS 5852
(CRIB 5) -
TB117:2013



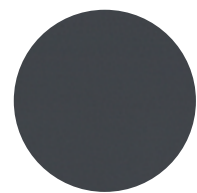
T783
Sabbia
Sand
Sand
Sable
Arena



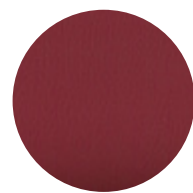
T791
Grigio
Grey
Grau
Gris
Gris



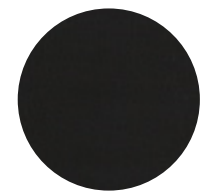
T776
Tortora
Taupe
Taubengrau
Taupe
Tórtora



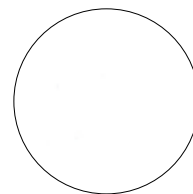
T792
Piombo
Lead
Blei
Plomb
Plomo



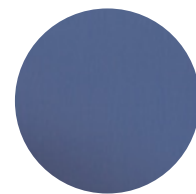
T804
Bordeaux
Bordeaux
Bordeaux
Bordeaux
Burdeos



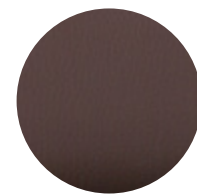
T016
Nero
Black
Schwarz
Noir
Negro



T003
Bianco
White
Weiß
Blanc
Blanco



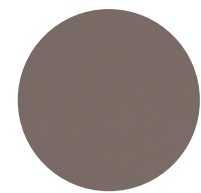
T151
Avio
Air force blue
Avio
Bleu pétrole
Avio



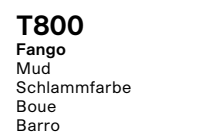
T50
Cioccolato
Chocolate
Schokolade
Chocolat
Chocolate



T777
Perla
Pearl
Perle
Perle
Perla



T800
Fango
Mud
Schlammfarbe
Boue
Barro



T800
Fango
Mud
Schlammfarbe
Boue
Barro

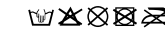
Finiture / Finishes

Ecopelle

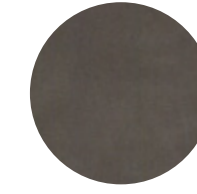
Imitation leather – Kunstleder – Similicuir – Imitación piel

Nobuko

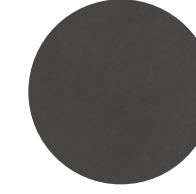
Composizione
Composition:
88% PU, 12% AF
Solidità alla luce
Light fastness:
5
Resistenza all'abrasione
Abrasion resistance:
Martindale
≥ 100.000 cicli / cycles



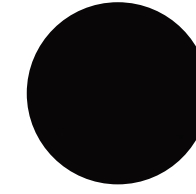
N3
Crema
Cream
Crème
Crème
Crema



N756
Fango
Mud
Schlammfarbe
Boue
Barro



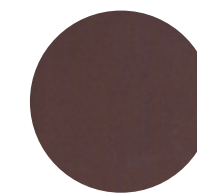
N516
Carbone
Charcoal
Kohle
Charbon
Carbón



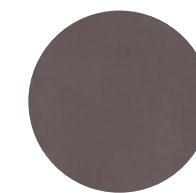
N780
Nero
Black
Schwarz
Noir
Negro



N483
Beige
Beige
Beige
Beige
Beige



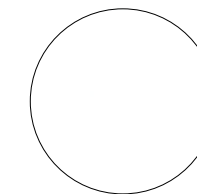
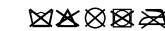
N603
Cannella
Cinnamon
Zimt
Cannelle
Canela



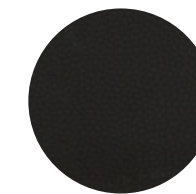
N06
Macchiato
Macchiato
Macchiato
Macchiato
Macchiato

Alce

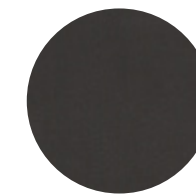
Composizione
Composition:
30% CO, 2% PU, 68% PVC
Solidità alla luce
Light fastness:
7
Resistenza all'abrasione
Abrasion resistance:
Martindale
≥ 102.400 cicli / cycles
UNI 9175/FA1 (1IM) - IMO - FTP BS 7176/EN1021
PARTS 1 & 2 1994 CALIFORNIA 117, SECTION E
Ignifugicità
Flame-retardant



A001
Bianco
White
Weiß
Blanc
Blanco



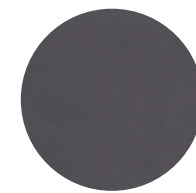
A016
Nero
Black
Schwarz
Noir
Negro



A140
Moka
Moka
Moka
Moka
Moka



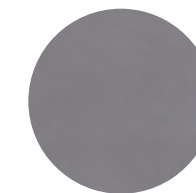
A175
Cappuccino
Cappuccino
Cappuccino
Cappuccino
Cappuccino



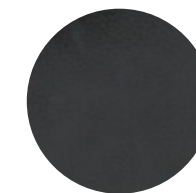
A240
Fango
Mud
Schlammfarbe
Boue
Barro



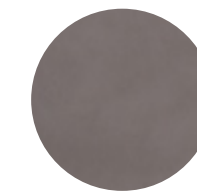
A450
Cammello
Camel
Kamel
Chameau
Camel



A750
Tortora
Taupe
Taubengrau
Taupe
Tórtora



A850
Antracite
Anthracite
Anthrazit
Anthracite
Gris oscuro



A950
Noce
Walnut
Nussbaum
Noyer
Nuez